



Surveillance IQ™

For Sybase IQ Server



Turnkey Monitoring Solution to Optimize IQ Performance

Key Benefits

Complete support for **IQ 15.3**. Monitor logical clusters, shared temporary stores, and PlexQ, or Distributed Query Processing (DQP)

Monitor the status of all multiplex servers in one comprehensive view

Pinpoint transactions holding other versions open across a multiplex environment

Understand who the power users are and the impact they are having on the IQ system

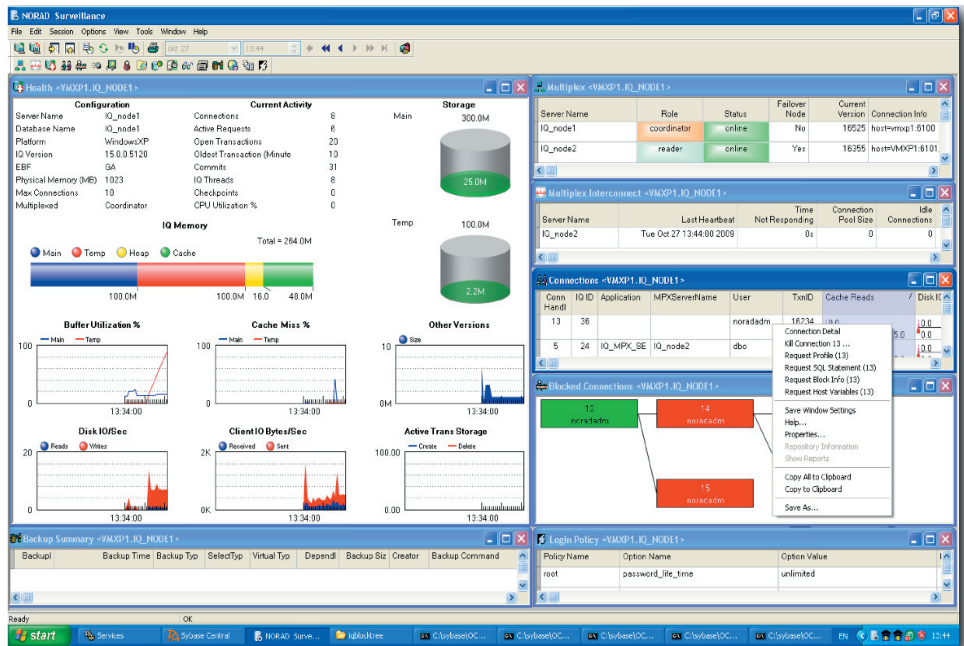
Display centralized views of all open transactions and associated "other versions" eliminating the manual process required to collect information from every server.

Capture SQL execution to identify who ran what SQL, when, and how long did it take

Produce reports for management on key service level statistics

Bradmark's **Surveillance IQ** maximizes Sybase's turnkey BI, analytics and data warehousing solution by enabling IQ professionals the capability to perform detail analysis on performance, view real-time database activity and generate alerts. New multiplex alerts and comprehensive dashboard provide proactive monitoring and quick problem diagnosis to ensure availability and reduce the time spent by DBA staff solving multiplex related issues. DBAs can also analyze external files such as the Catalog Store, Catalog Log, IQ Message File, and the server log directory for size and available space, and the configuration view shows the IQ configuration settings.

With additional monitoring metrics for non-Multiplex, Multiplex, VLDB, and ETL options, Surveillance provides an unprecedented offering for IQ customers that need a high performance, highly reliable analytics engine for faster reporting, predictive systems, as well as consolidated data marts and warehouses.



The high level health view allows administrators to get a quick snapshot of activity statistics, memory allocation and buffer utilization, storage utilization, disk IO and network IO.

Product Functionality

Latest Surveillance support for IQ15

- Mine IQ SQL Log information from the Recently Executed Statements window
- Support for the Coordinator and multiple Writer nodes in IQ 15 Multiplex
- Monitor Multiplex interconnect (INC), showing connection pooling and heartbeat
- Monitor multi-node loading (ETL)
- Monitor DBSpaces, showing availability and space usages
- Monitor backups that were performed
- Monitor login policies

Real-Time Monitoring Views

- Provides a global view of all open transactions across the multiplex
- Enterprise-wide, dashboard monitoring displays the status of servers and entities
- Identifies which server have active transactions responsible for other versions in the main store
- Detailed connection view provides connection level snapshot with detailed transaction, SQL and lock information
- Parse and capture SQL from the SQL log

- Capture table and column usage statistics from post execution explain plans
- Capture and show Index Advisor messages as Alerts
- Quick configuration options view allows the DBA to see configuration settings from inside the monitor
- Storage Detail view provides a running analysis of IQ main storage, temp storage and size of other versions
- External Files storage analysis lists key IQ files (Catalog Store, Catalog log, IQ Message File, and the server log directory), their size (in MB) and the space available for them to grow in their respective file systems

Key Rules Analysis and Alerting

- Alerts the DBA when an IQ database becomes unavailable.
- Alerts the DBA when the temporary store is about to max out, a situation that can halt an IQ database.
- Alerts the DBA before database outages occur from insufficient free space in OS file systems for important IQ files such as the IQ Message Log
- Alerts the DBA when there are excessive old versions utilizing a high percentage of other versions

- Alerts the DBA when temporary buffer utilization is becoming maxed out, a situation that causes the IQ system to run very slowly
- Alerts the DBA when IQ memory allocated exceeds the physical memory of the system which can cause thrashing.
- Alerts the DBA when transactions have been opened for an excessive amount of time which may be a cause of system resources not being released

Reports

- Provides resource usage reports for all IQ resource metrics that can be produced at a detail level for short periods of time, or a summary level by day or month for long term capacity planning.
- Capture and report on table space utilization for capacity planning
- Provides a consolidated view of errors across all IQ servers on the network to help the administrator analyze faults at a global level
- Provides a historical view of configuration options over time to help the DBA perform impact analysis of changes

System Requirements

Console Requirements:

- Windows 2000 or later
- 600 MHz Pentium Processor
- 128 Mb of RAM
- TCP/IP
- 80 MB free hard disk space
(Report Viewer requires additional space)

Agent Requirements:

- Platforms: Windows 2000 or later, HP-UX, AIX, Solaris, Linux
- TCP/IP
- 80 MB free hard disk space, more for repositories (Windows)
- 350 MB free hard disk space (UNIX)
- Full 64-bit product on UNIX and Linux

RDBMS Requirements:

- Sybase IQ Server version 12.5 - 15.x

About Bradmark

Privately-held for more than 25 years, Bradmark Technologies, Inc. develops, markets, sells, and supports data management solutions that provide anytime — anywhere access to managing database, application and operating system components. In addition to a direct sales force, Bradmark has an established worldwide network of channel partners.

To order, or for more information on other Bradmark products:

Phone: **(800) 621-2808** or outside the U.S.: (713) 621-2808

Fax: (713) 621-1639

Go to: **www.bradmark.com**

Bradmark EMEA

Tel: +31 (0) 251 268 248

Bradmark Technologies UK Ltd.

Tel: +44 (0) 870 240 6285

Bradmark Deutschland

Tel: +49 (0) 211 52391 154

Bradmark Asia

Tel: +86 10 8458 0860

