

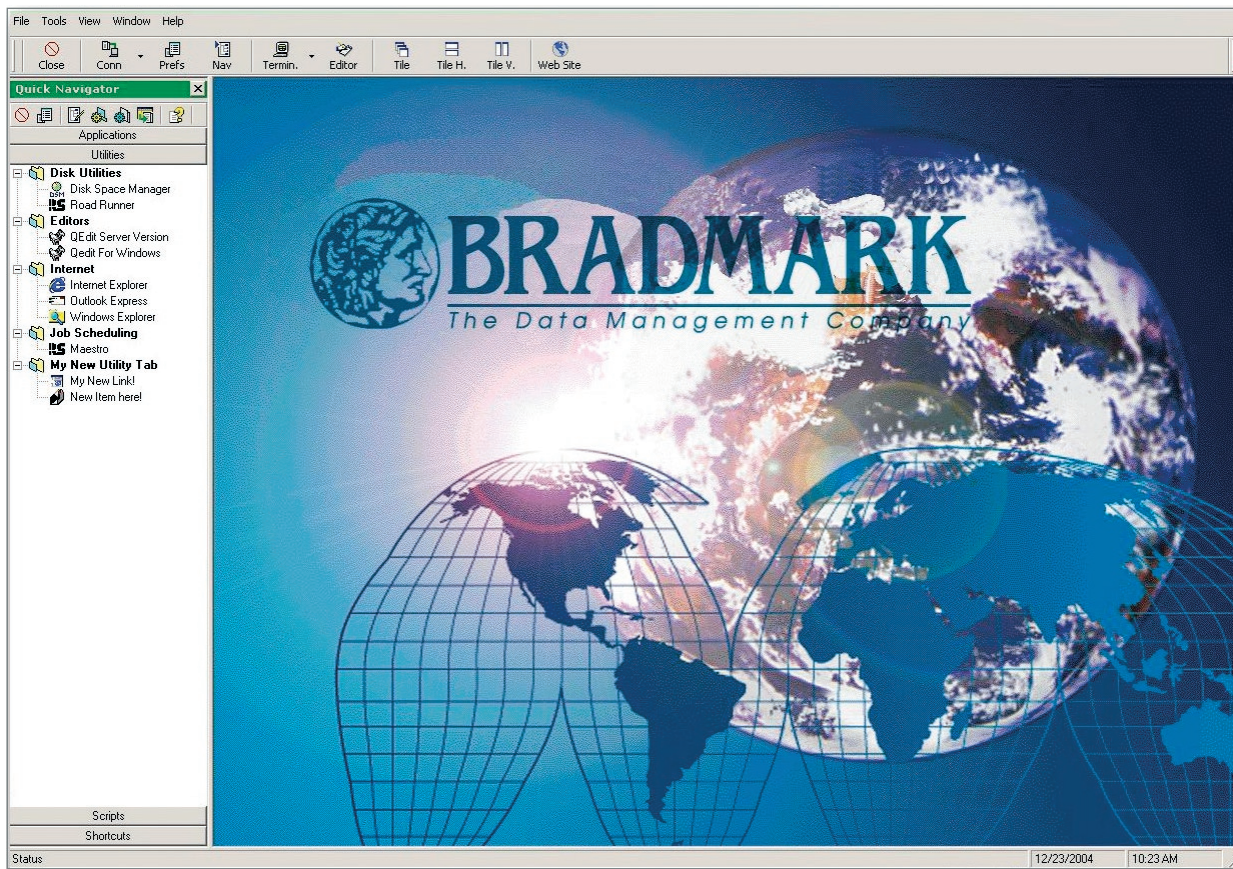


# MPE Command Center™

Bring the power and flexibility of Windows technology to the HP e3000 world

Managing your HP e3000 in the 21st century requires new tools. It is time to bring the ease and simplicity of the Windows interface to the HP e3000. The **MPE Command Center** provides a revolutionary management solution to MPE/iX that enables fast and effective management for both new and experienced users. The MPE Command Center brings ease of use and a Windows-based interface to your HP e3000. You can now perform routine and mundane system tasks in a fraction of the time. The Command Center will execute any command line function with just a few clicks of the mouse, replacing the need for entering lengthy command line interpreter instructions.

The MPE Command Center represents a true Windows-based replacement solution for the tedious tasks of managing accounts, jobs and spoolfiles. MPE commands can be handled from a single interface without logging on through a terminal emulation screen. The Command Center's graphical interface allows single-click commands and program launches to be executed via the monitor. This can save substantial time when executing common applications. With the MPE Command Center, you can take advantage of an attractive, instantly usable graphical user interface while retaining the power and reliability of the HP e3000.



## Key Benefits

### Monitor system performance and health...

*Tracking the vital signs of the operating system is automatic, freeing operators from reviewing each system individually. Now management is by exception, allowing time to perform other tasks.*

### Centralize all console messages...

*Console messages can be viewed in centralized locations. Command Center's color-coded filtering feature allows for message prioritization and alerting.*

### Quickly identify and correct distressed systems...

*As soon as a system's vital signs show a problem with system performance, a visual alert is created for the system in trouble. Operators can quickly identify the system through a visual alarm and then launch an application to resolve the problem using the context of that system.*

### Create a logical hierarchy of the network...

*By defining user maps and dragging and dropping server objects onto them, a network can be described visually.*

*Each map can contain a user-defined background image. Monitor and manage with your HP 3000 systems across the enterprise.*

### Decrease errors and increase productivity...

*Developers in need of constructing replicated application environments, especially on test systems, are faced with numerous commands to complete the task. In a Windows GUI environment, these tasks are reduced to a drag-and-drop function.*

*Merely selecting the required element, an account, user, group, or files through the same easily recognized Windows selection process, then following the Windows protocol to move or copy, creates and executes all of the required MPE/iX commands necessary to perform the task.*

*System operators, managers, and even users will find their daily interactions with the operating system enhanced because they no longer are challenged to remember the correct command and syntax for the action that needs to be accomplished. With the integration of other applications, the fast launch*

*capability saves time and effort to work within the MPE/iX CLI.*

### Fully integrated application launcher...

*Launching applications on a host system or in Command Center requires just a few simple clicks. Application information is taken from the Windows interface and passed on so user interaction is kept to single points of data entry or execution.*

### Quick and transparent logons between systems...

*System Managers can store encrypted passwords for each system and then simply click an application to begin a new session on the host system without entering logon information manually.*

### Server agent technology executes commands quickly and efficiently...

*With MPE Command Center, commands can be entered and processed faster through support system operations. System Managers can perform tasks quicker and improve their effectiveness with Command Center's GUI solution to MPE/iX.*

## System Requirements

### PC Requirements:

- Windows 2000 or NT version 4.0 service pack 3. We recommend testing with NT 4.0 and Internet Explorer 4.01 or above.
- Approximately 40 megabytes of free space on a hard drive.
- 256 colors and we recommend larger monitors (17 inches and above) although it will work at smaller resolutions. \*Minimum resolution is 800 X 600

### HP 3000 Requirements:

- MPE/iX 5.0 or above.
- TCP/IP networked.

## About Bradmark

Privately-held for more than 20 years, Bradmark Technologies, Inc. develops, markets, sells and supports data management solutions that provide anytime — anywhere access to managing database, application and operating system components.

In addition to a direct sales force, Bradmark has an established worldwide network of channel partners.

### To order or for more information on other Bradmark products:

Phone: **(800) 621-2808** or  
Outside the U.S.: (713) 621-2808  
Fax: (713) 621-1639  
Or, visit our Web site: **www.bradmark.com**

*In the UK:*

**Bradmark Technologies UK Ltd.**  
Tel: +44 (0)870 240 6285  
Fax: +44 (0)121 321 3555

*In Germany:*

**Bradmark Deutschland GmbH**  
Tel: +49 (0)89 962 09012  
Fax: +49 (0)89 962 80860

