

Surveillance UI™

Web User Interface Monitoring

Browser & tablet-based monitoring for anytime-anywhere database access

Monitor any Sybase server through a standard web browser or mobile device with the Adobe Flash Player plug-in. Surveillance UI supports many flash-based tablet platforms, providing IT professionals the means to access system information anytime, anywhere to ensure reliable availability and performance of their enterprise environment.

Key Benefits

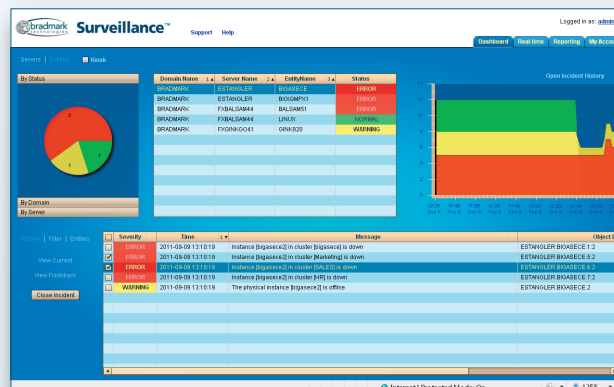
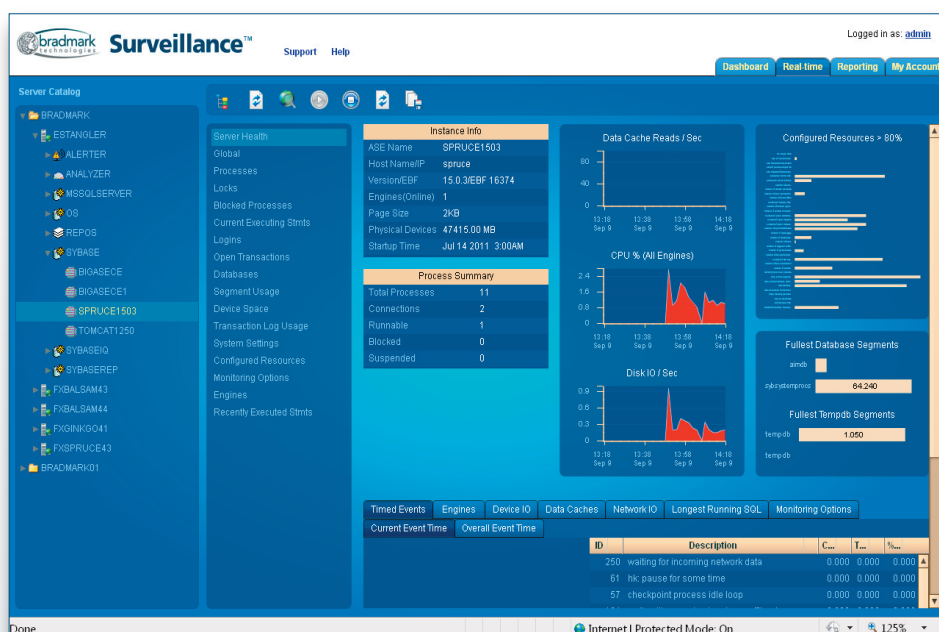
Real-time availability and performance monitoring of any Sybase server

Enterprise-wide, dashboard monitoring displays the status of servers and entities

Receive proactive notification of potential problems before the database is affected

Perform deep dive drilldowns to determine the root cause of a recent outage

Predicts future system requirements by trending historical performance data



View real-time ASE server statistics and processes as well as Sybase IQ server health.

The Surveillance Dashboard View

Product Summary

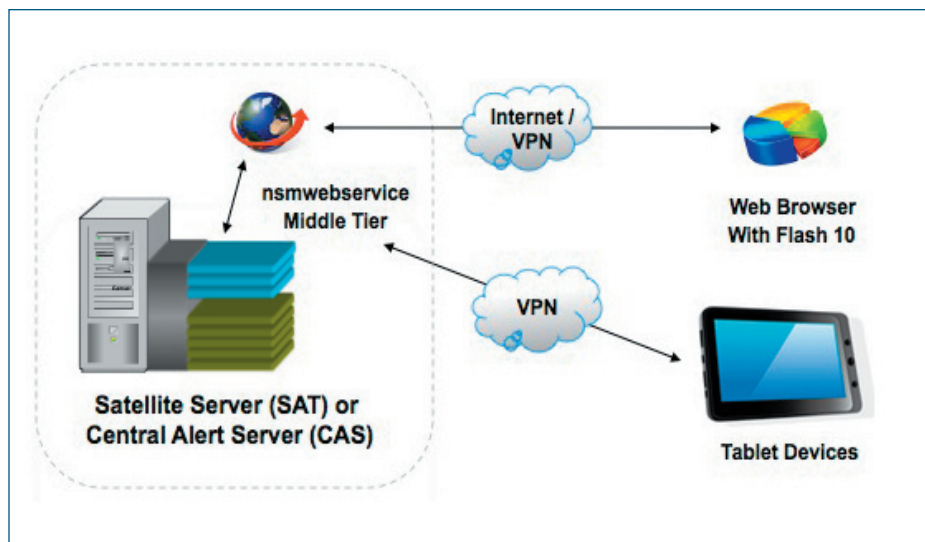
Be Proactive vs. Reactive... Detect and resolve problems before a crisis can affect availability by setting rules for violations combined with unattended alerting when a threshold has exceeded.

Maximize Performance and Availability... Avoid an outage by identifying problems quickly with an immediate global view of database activity and detailed performance metrics without writing scripts.

Determine Root Cause... Go back to review the period of time in which a problem occurred as if it were in real-time.

Plan for the Future... Use trend performance and space utilization data to support system upgrades and/or decisions regarding additional disk space.

Maximize Scarce Resources...
The DBA can concentrate on improving performance and developing new databases rather than looking for problems.



Surveillance Web Architecture

System Requirements

Interface Requirements:

- 1.0 GHz dual-core processor
- 512 MB RAM

Agent Requirements:

- Platforms: Windows Server 2003 or later, AIX, HP-UX PA-RISC, HP-UX Itanium, Linux x64 - x86, Linux POWER, Solaris SPARC, Solaris x64, Tru64
- Full 64-bit support on UNIX and Linux
- 200 MB disk space, plus repositories

RDBMS Requirements:

- Sybase ASE v 12.0 or later
- Sybase ASE-CE version 15.0.3
- Sybase Replication Server v 12.6 or later
- Sybase IQ Server v 12.6 or later

Tablet Device Support:

- Samsung Galaxy Tab 10.1, Toshiba Thrive (Android 3.1), BlackBerry Playbook (QNX), and the HP TouchPad (webOS)

About Bradmark

Privately-held for more than 20 years, Bradmark Technologies, Inc. develops, markets, sells and supports data management solutions that provide anytime — anywhere access to managing database, application and operating system components. In addition to a direct sales force, Bradmark has an established worldwide network of channel partners.

To order, or for more information on other Bradmark products:

Phone: **(800) 621-2808** or outside the U.S.: (713) 621-2808

Fax: (713) 621-1639

Go to: **www.bradmark.com**

Bradmark Technologies UK Ltd.

Tel: +44 (0) 870 240 6285

Fax: +44 (0) 870 135 8569

Bradmark Netherlands

Tel: +31 (0) 251 268 248

Fax: +31 (0) 251 268 249

Bradmark Asia

Tel: +86 10 8458 0860

Fax: +86 10 8458 0860

