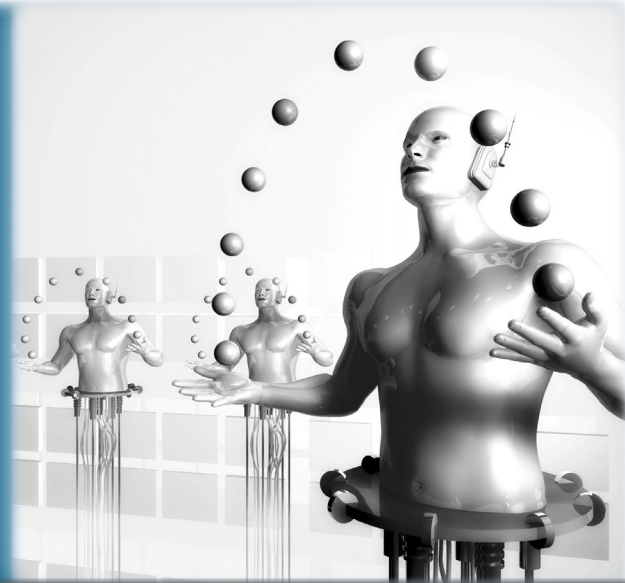




Welcome to the World of Sybase Solutions from Bradmark



"Bradmark has exhibited outstanding customer service and around-the clock technical support. From answers to simple questions to more involved 'how-to' inquiries, support has been very responsive, even after the sale."

— Nancy Dreisbach, DBA, STARZ!

INTRODUCTION

Whether you are running a data warehouse application, high availability online transaction system or a regular database, you need tools to ensure that your systems are up and running and performing to agreed service levels. In the past, these tools may have come from various manufacturers, employing multiple interfaces and disparate technologies.

Now the choice is simple. Bradmark's data management solution for Sybase is the only cross-functional set of monitoring tools that satisfy all of your data management needs across your entire Sybase installation and beyond. Through a common interface and a highly scalable technology, you can now monitor and maintain all of your systems and keep your end users happy.

Welcome to the World of Sybase Solutions from Bradmark!

END-TO-END SYBASE MONITORING

The ideal partner for your Sybase ASE®, Replication Server and IQ systems, Bradmark's **Surveillance™ for Sybase** is a comprehensive family of products that spans all of the major distributed database environments as well as UNIX®, Linux® and Windows® operating systems.

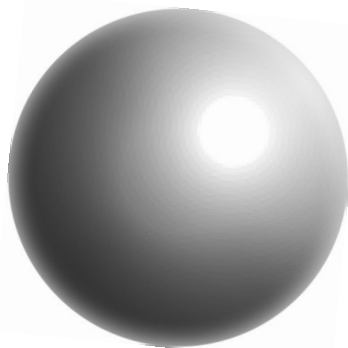
One development team has built Surveillance real-time monitoring tools from the ground up and the unique agent-based architecture is suited to any size implementation. The server agents occupy very small footprints, usually as low as 2% of the system resources and have minimal impact on network traffic due to the autonomous nature of the agent. Surveillance includes a hierarchical alerting mechanism and comes with a standard set of rules for the various system environments. However, users can create customized rules and alerts for every conceivable condition and organizational structure. Alerts can be sent to a variety of outputs, including email, pager, console, SNMP traps as well as to HP OpenView and Tivoli enterprise management systems. A historical repository builds history data for problem resolution and performance management purposes.

Complementing the historical data is a powerful reporting tool based on Crystal Reports® that includes standard and user definable reporting. The system performance and availability can be viewed and managed from multiple Windows workstations, regardless of location.

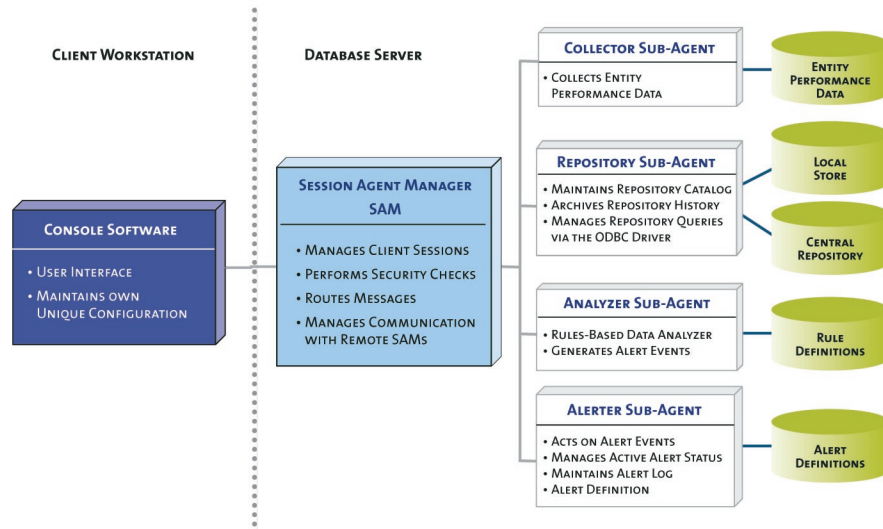
Surveillance can be up and running out of the box in a matter of minutes and DBAs can take advantage of this powerful monitoring suite immediately. From the simple to the complex, Surveillance will grow and develop with your team and is the only end-to-end monitoring tool for every Sybase environment as well as the operating systems and other database environments.

SURVEILLANCE DB™ FOR SYBASE ASE

Surveillance DB provides a real-time view of database activity and detailed performance metrics for the Sybase ASE environment. Statistics on session and process activity, locked sessions, batch contention, file I/O and much more can be viewed simultaneously for multiple databases. Surveillance is configured to look for error conditions or performance issues and send alerts to the DBA team as well as to initiate scripts to correct problems.



Surveillance is composed of two major components: the Server Agent and the Console. The Server Agent is the set of programs used to collect data and automate analysis of the database servers. The Console is the set of programs the end user runs to view real-time performance data, configure the connectionless monitoring, alerting, and historical collection of performance data.



Data from the Historical Repository can be used for problem resolution as well as for system upgrade and capacity planning purposes. Surveillance is shipped with a comprehensive set of pre-defined rules and alerts but can be easily configured for various organizational and operational requirements.

SURVEILLANCE RS™ FOR SYBASE REPLICATION SERVER

Surveillance RS monitors the availability and performance of the Sybase Replication Server and can be used in conjunction with the ASE and operating system components to provide a complete view of the system. One window, with a drill-down capability, provides a high-level overview of reliability and performance metrics such as thread status, partition utilization, inbound SQM activity, outbound DSI queues, transaction exceptions, memory utilization and the status of warm standby pairs.

Additionally, configuration of the Replication Server is monitored, including all configuration parameters stored in the RSSD that affect operations. The full functionality of Surveillance is available to implement custom rules and alerts for the organizational and operational requirements of the business.

SURVEILLANCE IQ™ FOR SYBASE IQ

Working in collaboration with **Surveillance OS**, the **Surveillance IQ** module provides real-time statistics on memory allocation, buffer and storage utilization, and disk and network I/O. Connections are shown with their resource utilization and detailed drill-downs to transactions, SQL and lock information. The transaction view provides a list of all open transactions and their resources and the storage view provides a running analysis of IQ storage data.

External files such as the Catalog Store, Catalog Log, IQ Message File and the server log directory are analyzed for size and available space and the configuration view shows the IQ configuration settings. Standard alerts are provided for notification of all parameters that would take an IQ database offline or negatively affect its performance.

SURVEILLANCE OS™ FOR UNIX, LINUX AND WINDOWS

Complementing the database modules, **Surveillance OS** monitors multiple variants of UNIX, Linux and Windows operating systems. Important statistics such as CPU, disk I/O, memory, swap space, file system and process resource utilization are measured.

In addition to these detailed operating statistics, there are user-customizable collectors for Logfiles and application processes and Script Execution with analysis of results. Logfile monitoring can be implemented to search any particular Logfile for certain conditions and alert only on those results. Surveillance Heartbeat Monitoring is a highly flexible resource for monitoring one or more servers that can be configured to minimize overhead on either the server or the network while implementing redundancy for greater reliability.