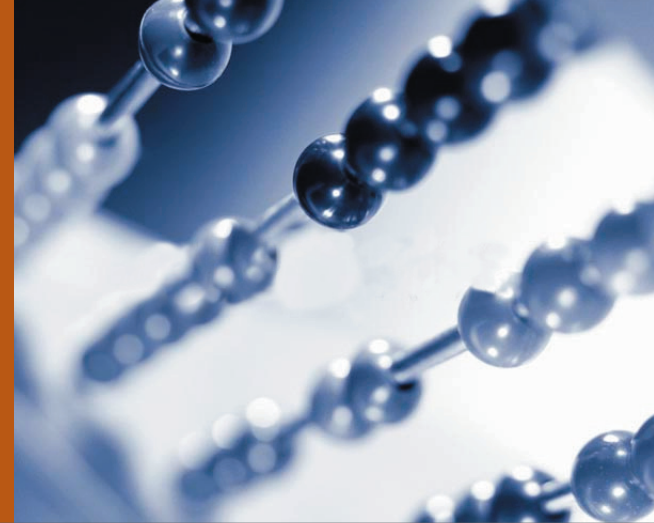




SurveillanceRS™

For Sybase Replication Server



Reliable Replication Monitoring to Ensure Data Availability

Surveillance RS monitors the availability and performance of the Sybase Replication Server and can be used in conjunction with the ASE and operating system components to provide a complete view of the system. One window, with drill-down capability, provides a high-level overview of reliability and performance metrics such as thread status, partition utilization, inbound SQM activity, outbound DSI queues, transaction exceptions, memory utilization and the status of warm standby pairs.

Additionally, configuration of the Replication Server is monitored, including all configuration parameters stored in the RSSD that affect operations. The full functionality of Surveillance is available to implement custom rules and alerts for the organizational and operational requirements of the business.

Key Benefits

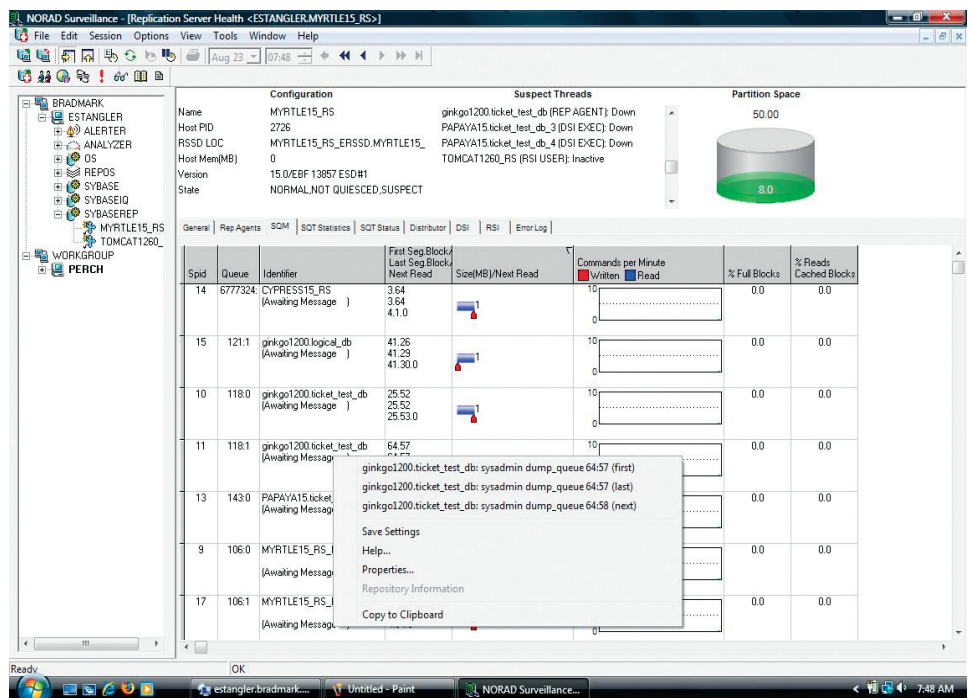
Provides complete end-to-end monitoring of your replication server environment, in conjunction with Surveillance for Sybase ASE

Provides both operational and performance monitoring in one tool

Provides historical reports on data flow, partition space utilization, transaction throughput, availability and much more for capacity planning and defect analysis

Detailed views of individual thread performance help quickly identify the source of performance problems when they occur

Calculates relevant performance metrics for assessing performance of the various components of the Replication Server



Health view provides a top-level view of key performance and utilization metrics to quickly assess the overall health of an ASE.

Product Functionality

Latest Surveillance RS Features

- New latency monitoring utilizing the RS_TICKET feature
- New feature to dump queue contents from Surveillance Health View
- Display Metadata through the monitor GUI
- Revamped Replication Agent view with primary ASE statistics, status, and configuration information
- Analyze queue contents, specifically, the block of the first, current, and last transaction in the queue, or viewing a specific block
- Latency by specific source, not only worse case
- Enhanced exceptions handling views and processing

Key Alerts:

- RepServer is down or not responding.

- A Replication Server thread is down or not responding.
- Partition space usage, both by percentage utilized and rate of utilization growth.
- Individual stable queue length and unread queue% is growing excessively.
- Throughput is below expected levels (mbytes/minutein, transaction/minute out).
- Various memory efficiency alerts such as % reads from cache is low, excessive removed transactions, etc to help tune memory allocation.
- New exception transactions have occurred.
- Errors have been posted to the log file.

ASE Monitoring (primary database):

- At the primary database, monitors the time the replication agent is behind in processing transaction log.

- Provides graphical view of log file growth rate as well as overall utilization to alert when availability may be compromised.
- Monitors the general status of the replication agent and alerts when not connected and streaming transaction log.

ASE Monitoring (replicate database):

- Monitors DSI executor threads and alerts when excessive blocking occurs or they are log suspended.
- Provides a graphical monitor of transaction latency and alerts when excessive.
- Monitors when transactions have been received and alerts if no transactions have been received from the Replication Server for an excessive time period.
- Monitors the transaction log % utilization on the replicate database and alerts when it is filling up.

System Requirements

Console Requirements:

- Windows 2000 or later
- 600 MHz Pentium Processor
- 128 MB of RAM
- 100 MB free hard disk space

Agent Requirements:

- Platforms: Windows 2000 or later, AIX, HP-UX PA-RISC, HP-UX Itanium, Linux x86, Solaris SPARC, Solaris x64, and Tru64
- Full 64-bit support on UNIX and Linux
- TCP/IP
- 80 MB free hard disk space, more for repositories (Windows)
- 300 MB free hard disk space (UNIX)

RDBMS Requirements:

- Sybase ASE version 12.0 or later
- Sybase Replication Server ver. 12.1 or later

About Bradmark

Privately-held for more than 25 years, Bradmark Technologies, Inc. develops, markets, sells, and supports data management solutions that provide anytime — anywhere access to managing database, application and operating system components. In addition to a direct sales force, Bradmark has an established worldwide network of channel partners.

To order, or for more information on other Bradmark products:

Phone: **(800) 621-2808** or outside the U.S.: (713) 621-2808

Fax: (713) 621-1639

Go to: **www.bradmark.com**

Bradmark EMEA

Tel: +31 (0) 251 268 248

Bradmark Technologies UK Ltd.

Tel: +44 (0) 870 240 6285

Bradmark Deutschland

Tel: +49 (0) 211 52391 154

Bradmark Asia

Tel: +86 10 8458 0860

