

# Surveillance OS™

## For UNIX, Linux and Windows OS

Complementing the database modules, Bradmark's **Surveillance OS** monitors multiple variants of UNIX, Linux and Windows operating systems. Important statistics such as CPU, disk I/O, memory, swap space, file system and process resource utilization are measured.

In addition to these detailed operating statistics, there are user-customizable collectors for Logfiles and application processes and Script Execution with analysis of results. Logfile monitoring can be implemented to search any particular Logfile for certain conditions and alert only on those results. Surveillance Heartbeat Monitoring is a highly flexible resource for monitoring one or more servers that can be configured to minimize overhead on either the server or the network while implementing redundancy for greater reliability.

### Key Benefits

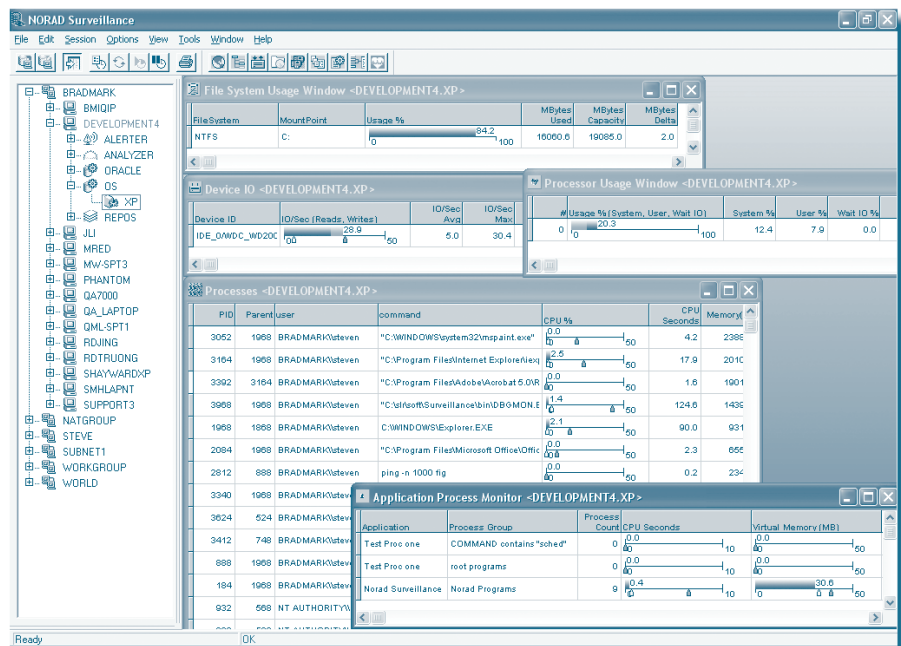
*Maximize performance and availability of operating system and applications data*

*Quickly identify problems that are causing a crisis for your technical professionals and hindering business objectives*

*Send alerts when business objectives are not being met by monitoring application data*

*Monitor application data and send alerts when problems occur*

*Produce high quality reports from Surveillance Centralized Repository Database, and generate numerous pre-defined reports for each monitored platform.*



**Surveillance OS** combines database, operating system, and application monitoring with event management.

## Product Functionality

### Real-Time Monitoring views

- View global statistics for Windows, UNIX and Linux servers at a glance from a single console
- See CPU utilization in total across all processors or broken down by processor
- See Disk I/O as a whole or broken down by hardware device
- See memory and swap usage
- View processes and sort output by process name, amount of CPU consumed or other performance metrics
- View filesystem mount points (*or drives in Windows*) and the associated percent full and space used

Sort this output to quickly see which file system is most full or filter the output to see only the file systems that match a certain pattern

- Group processes together to see how an application as a whole uses CPU and memory

### Key Rules Analysis and Alerting

- Get alerts on CPU not when a CPU spikes for one interval but when a threshold has been crossed for a certain amount of time
- Restart processes that fail and send alert about the restarted process
- Specify different event handlers based on thresholds that have been breached
- Receive emails, popup windows, send SNMP traps or integrate directly with Tivoli or Openview

- Monitor any text log file for any combination of key words

### Reports

- View history of key OS statistics such as CPU, disk I/O and memory usage
- View processes that were running on the server at a certain time
- View CPU pie charts to show all running processes in a window and how much CPU was being used by each
- View reports of all Surveillance events that occur from servers displaying how long a threshold was breached or how long a server was down

## System Requirements

### Console Requirements:

- Windows 98/NT/2000/XP/2003
- Pentium Processor
- 32 MB of RAM
- TCP/IP
- 16 MB free hard disk space

### Agent Requirements:

- Platforms: Windows NT/2000/XP/2003  
Solaris, AIX, Reliant UNIX, HP-UX, Tru64,  
Linux Kernel
- TCP/IP
- 25 MB free hard disk space,  
more for repositories (Windows)
- 300 MB free hard disk space (UNIX)

## About Bradmark

Privately-held for more than 20 years, Bradmark Technologies, Inc. develops, markets, sells and supports data management solutions that provide anytime — anywhere access to managing database, application and operating system components. In addition to a direct sales force, Bradmark has an established worldwide network of channel partners.

*To order, or for more information on other Bradmark products:*

Phone: **(800) 621-2808** or outside the U.S.: (713) 621-2808  
Fax: (713) 621-1639  
Go to: **www.bradmark.com**

### Bradmark Technologies UK Ltd.

Tel: +44 (0) 870 240 6285  
Fax: +44 (0) 870 135 8569

### Bradmark Deutschland

Tel: +49 (0) 89 962 09012  
Fax: +49 (0) 89 962 80860

### Bradmark Netherlands

Tel: +31 (0) 251 268 248  
Fax: +31 (0) 251 268 249

### Bradmark Asia

Tel: +86 (10) 8458 0860  
Fax: +86 (10) 8458 5027

