



Surveillance OS™

For UNIX, Linux and Windows OS

Monitor and Collect Key Statistics to Ensure System Health

Complementing the database toolset, Bradmark's **Surveillance OS** monitors multiple variants of UNIX, Linux and Windows operating systems. Important statistics such as CPU, disk I/O, memory, swap space, file system and process resource utilization are measured.

In addition to these detailed operating statistics, there are user-customizable collectors for Logfiles and application processes and Script Execution with analysis of results. Logfile monitoring can be implemented to search any particular Logfile for certain conditions and alert only on those results. Surveillance Heartbeat Monitoring is a highly flexible resource for monitoring one or more servers that can be configured to minimize overhead on either the server or the network while implementing redundancy for greater reliability.

Key Benefits

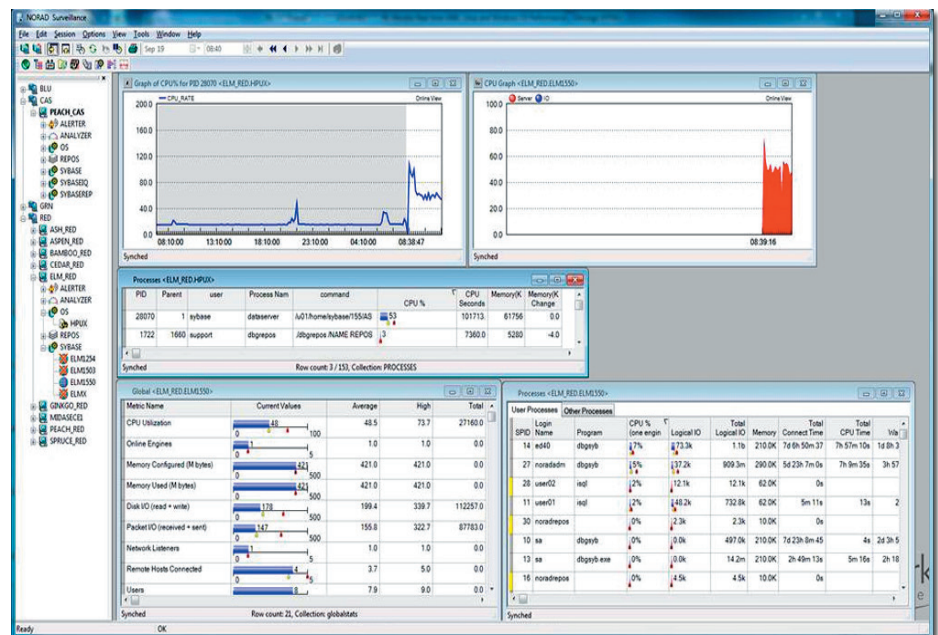
Maximize performance and availability of operating system and applications data

Quickly identify and resolve problems that are hindering business objectives

Enterprise-wide, dashboard monitoring displays the status of servers and entities

Determine the root cause of a recent outage using Flashback analysis

Produce high quality reports for each monitored platform from Surveillance Centralized Repository Database



Surveillance OS combines database, operating system, and application monitoring with event management.

Product Functionality

Real-Time Monitoring views

- View global statistics for Windows, UNIX and Linux servers at a glance from a single console
- See CPU utilization in total across all processors or broken down by processor
- See Disk I/O as a whole or broken down by hardware device
- See memory and swap usage
- View processes and sort output by process name, amount of CPU consumed or other performance metrics
- View filesystem mount points (*or drives in Windows*) and the associated percent full and space used

Sort this output to quickly see which file system is most full or filter the output to see only the file systems that match a certain pattern

- Group processes together to see how an application as a whole uses CPU and memory

Key Rules Analysis and Alerting

- Get alerts on CPU not when a CPU spikes for one interval but when a threshold has been crossed for a certain amount of time
- Restart processes that fail and send alert about the restarted process
- Specify different event handlers based on thresholds that have been breached
- Receive emails, popup windows, send SNMP traps or integrate directly with Tivoli or Openview

- Monitor any text log file for any combination of key words

Reports

- View history of key OS statistics such as CPU, disk I/O and memory usage
- View processes that were running on the server at a certain time
- View CPU pie charts to show all running processes in a window and how much CPU was being used by each
- View reports of all Surveillance events that occur from servers displaying how long a threshold was breached or how long a server was down

System Requirements

Console Requirements:

- Windows 2000 or later
- 600 MHz Pentium Processor
- 128 MB of RAM
- 100 MB free hard disk space

Agent Requirements:

- Platforms: Windows Server 2003 or later, AIX, HP-UX PA-RISC, HP-UX Itanium, Linux x64 - x86, Linux POWER, Solaris SPARC, Solaris x64, Tru64
- Full 64-bit support on UNIX and Linux
- 200 MB disk space, plus repositories

About Bradmark

Privately-held for more than 25 years, Bradmark Technologies, Inc. develops, markets, sells, and supports data management solutions that provide anytime — anywhere access to managing database, application and operating system components. In addition to a direct sales force, Bradmark has an established worldwide network of channel partners.

To order, or for more information on other Bradmark products:

Phone: **(800) 621-2808** or outside the U.S.: (713) 621-2808

Fax: (713) 621-1639

Go to: **www.bradmark.com**

Bradmark EMEA

Tel: +31 (0) 251 268 248

Bradmark Technologies UK Ltd.

Tel: +44 (0) 870 240 6285

Bradmark Deutschland

Tel: +49 (0) 211 52391 154

Bradmark Asia

Tel: +86 10 8458 0860

